

MONTHLY MEMBERSHIP PROGRESS REPORT

LOCATION ALABAMA

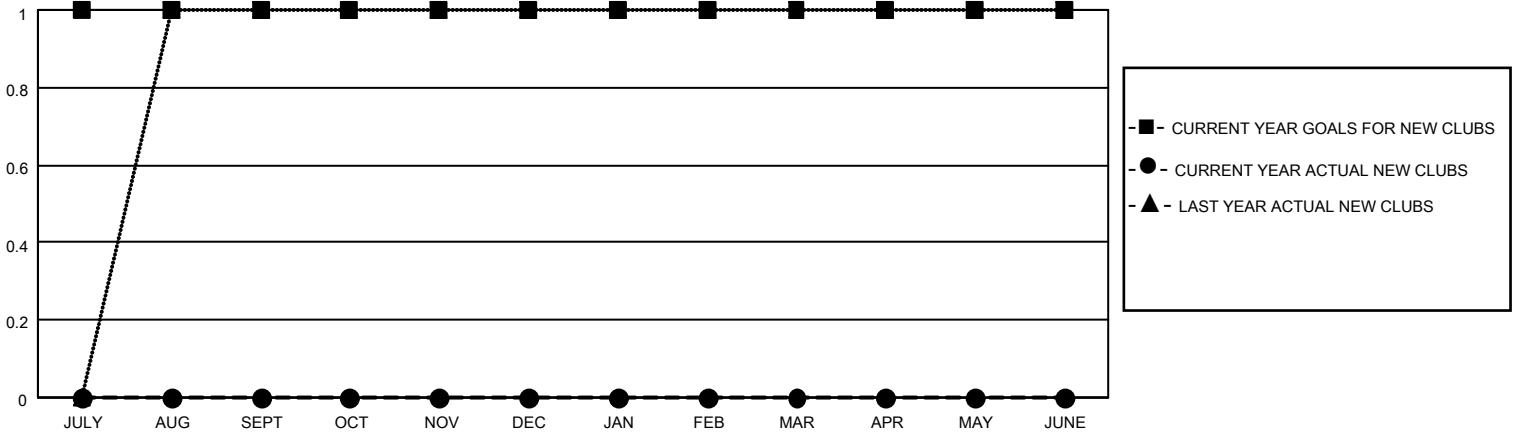
District 34 C

Results as of: 3/31/2022

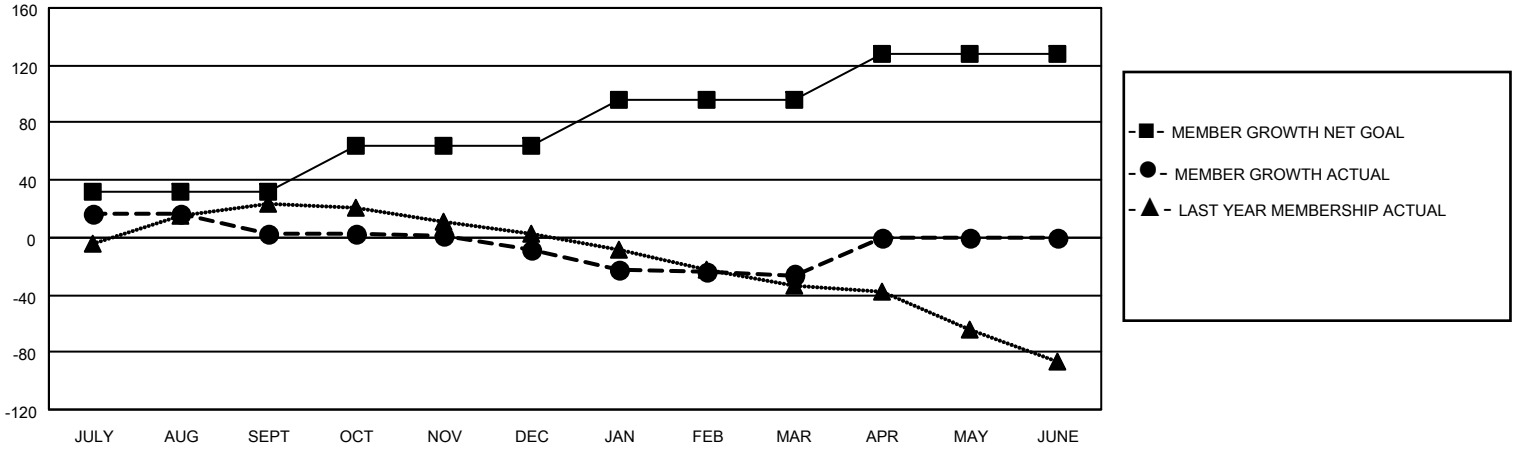
Clubs			
RESULTS FOR 2021-2022			
QUARTER	NEW CLUB GOAL	NEW CLUBS	DROPPED CLUBS
JULY/AUG/SEPT	1	0	1
OCT/NOV/DEC	0	0	1
JAN/FEB/MAR	0	0	1
APR/MAY/JUNE	0	0	0

Members			
RESULTS FOR 2021-2022			
QUARTER	MEMBER GROWTH NET GOAL	MEMBER GROWTH ACTUAL	DROPPED MEMBERS ACTUAL (including transfers)
JULY/AUG/SEPT	32	49	43
OCT/NOV/DEC	32	28	37
JAN/FEB/MAR	32	19	35
APR/MAY/JUNE	32	0	0

GOALS AND ACTUAL NEW CLUBS CUMULATIVE



GOALS AND ACTUAL MEMBERS CUMULATIVE



DROPPED CLUBS: 3

24 CLUBS OF 38 ADDED 1 OR MORE NEW MEMBERS

GENDER DISTRIBUTION

MALE	607 (63.30%)
FEMALE	352 (36.70%)
NON BINARY	0 (0.00%)
PREFER NOT TO ANSWER	0 (0.00%)

DROPPED MEMBERS

[CLICK HERE FOR CUMULATIVE MEMBERSHIP DATA](#)

DECEASED	20
CLUB CANCELLED	16
OTHER	79
TOTAL	115

TOTAL FAMILY UNIT MEMBERS 163

FAMILY MEMBERS PAYING HALF DUES 83